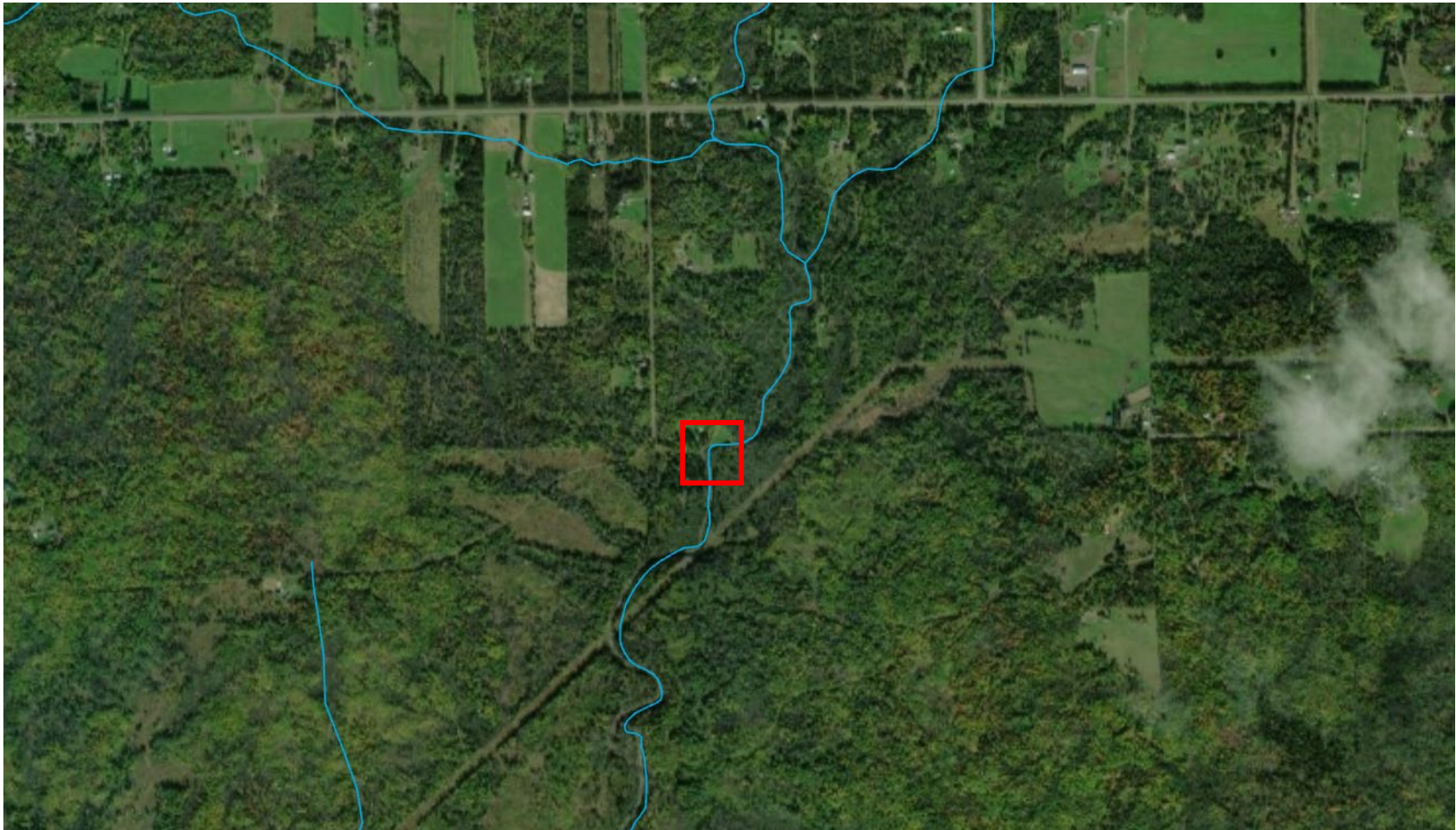


## Knife River Reach 14 Assessment Report





## Long Profile

Station	TW	WS	BF
0	963.72	964.73	965.92
10	963.32		
18	963.08		
28	963.25		
40	963.06		
43	962.87		
52	963.09		
59	962.27		
67	963.23		
74	963.45		
81	963.93	964.74	966.01
86	963.17		
92	962.51		
99	962.96		
111	963.06		
121	963.41		
132	963.49		
142	963.49		
148	963.6		
151	963.77	964.19	
158	963.4		
165	962.78		
172	962.53		
180	962.98		
188	963.04	964.01	964.89
192	962.91		
204	962.34		
213	962.77		
223	962.29		
233	961.18		
250	962.09		
260	962.43		
271	962.88		
282	962.5		
294	962.1	963.9	964.95
300	962.19	963.87	
314	962.34		
325	962		
333	962.01		

Station	TW	WS	BF
343	962.65	963.9	965.11
360	962.91		
370	962.77		
379	962.57		
390	962.81		
398	963.11		
411	962.8		
420	962.96		
427	962.64	963.61	965.32
434	962.8		
442	962.14		
452	961.86		
458	961.69		

XS 1 at 58

Distance	FS	Notes
0	971.47	
4	966.87	
12	966.58	
21	967.15	
27	965.97	
31	965.33	
32	964.67	lew
33	963.35	
35	963.24	
37	963	
39	962.76	
41	962.45	
43	962.18	
45	962.77	
47	962.6	
48.5	964.72	rew
50	965.33	
53	966.09	
56	967.62	
150	967.62	

XS 2 at 106

Distance	FS	Notes
0	969.18	
4	968.18	
13	965.88	
16.5	964.37	lew
20	964.1	
22	963.7	
24	963.61	
26	963.56	
28	963.46	
30	963.46	
32	963.33	
34	963.27	
36	962.93	
38	963.16	
40	963.08	
42	963.32	
44	963.97	
46	964.37	rew
47	966.17	
53	966.83	
103	966.83	

XS 3 at 282

Distance	FS	Notes
0	963.76	
7	962.86	
16	962.46	
18	961.31	
25	960.42	lew
28	959.9	
30	959.41	
32	958.97	
34	959.13	
36	959.13	
40	959.11	
42	959.11	
44	958.9	
46	958.91	
48	959.21	
51	959.66	
56	960.49	rew
59	961.07	
69	971.21	

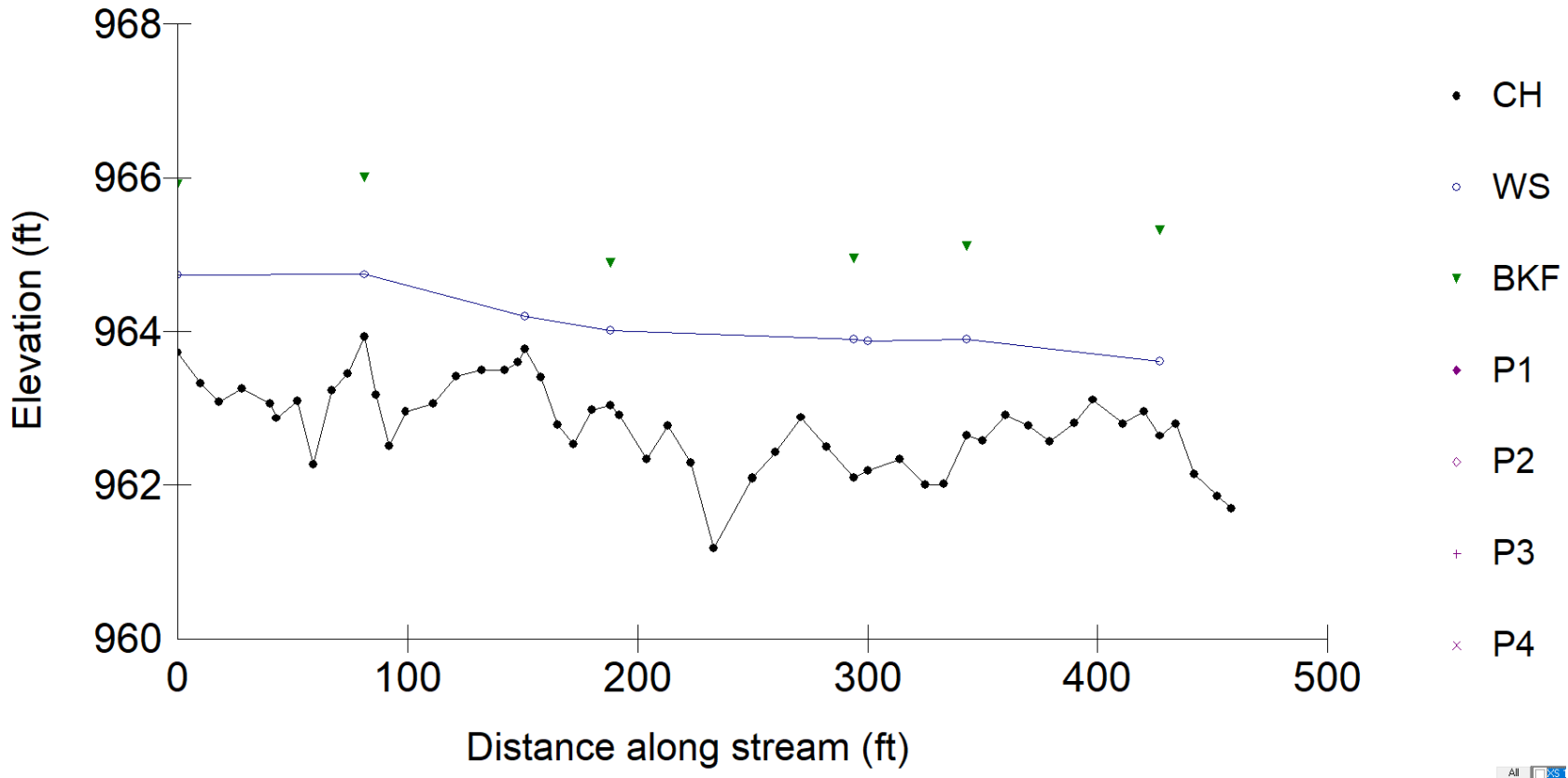
XS 4 at 335

Distance	FS	Notes
0	965.71	
3	966.17	
13	965.95	
17	965.25	
20	963.86	lew
24	963.65	
27	963.01	
29	962.83	
31	962.81	
33	962.58	
35	962.38	
37	962.05	
39	961.92	
42	962.12	
44	962.44	
46	962.2	
48	962.53	rew
51	962.86	
51.1	963.86	
51.5	964.98	
59	965.21	
65	968.21	

XS 5 at 416

Distance	FS	Notes
0	969.21	
3	966.39	
13	965.66	
17	964.77	
20	963.64	lew
24	962.91	
27	963.03	
29	963.14	
31	963.17	
33	962.95	
35	962.83	
37	962.96	
39	962.97	
42	962.88	
44	962.77	
46	962.95	
48	962.98	
51	963.61	rew
51.1	964.41	
51.5	966.71	
60	968.21	

Long Profile



### XS 1 @ 58

○ Ground Points

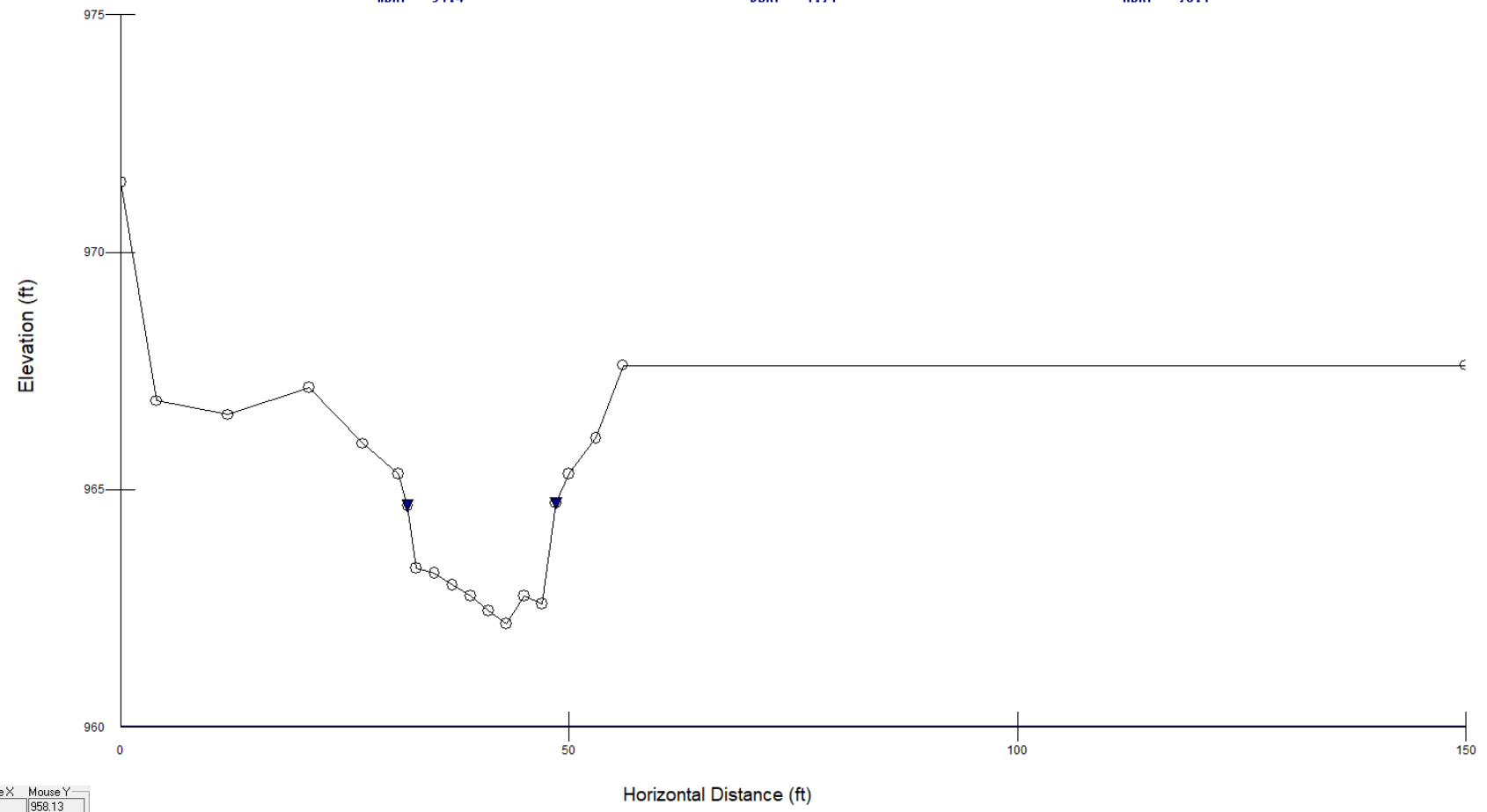
◆ Bankfull Indicators

▼ Water Surface Points

**Wbkf = 51.4**

**Dbkf = 1.91**

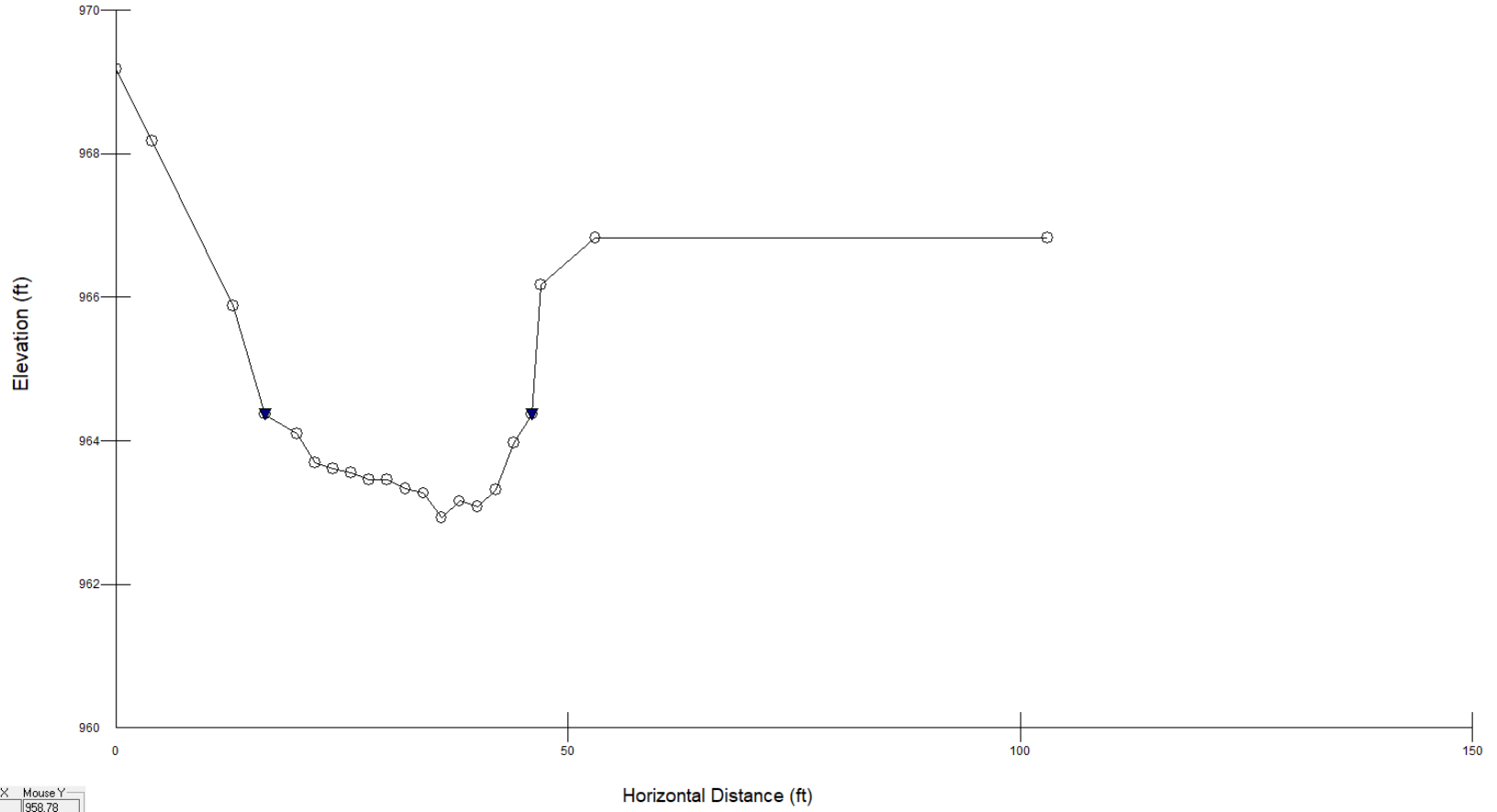
**Abkf = 98.1**



Mouse X	Mouse Y
30.65	958.13

XS 2 @ 106

○ Ground Points      ◆ Bankfull Indicators      ▼ Water Surface Points



Mouse X: 36.05    Mouse Y: 968.78

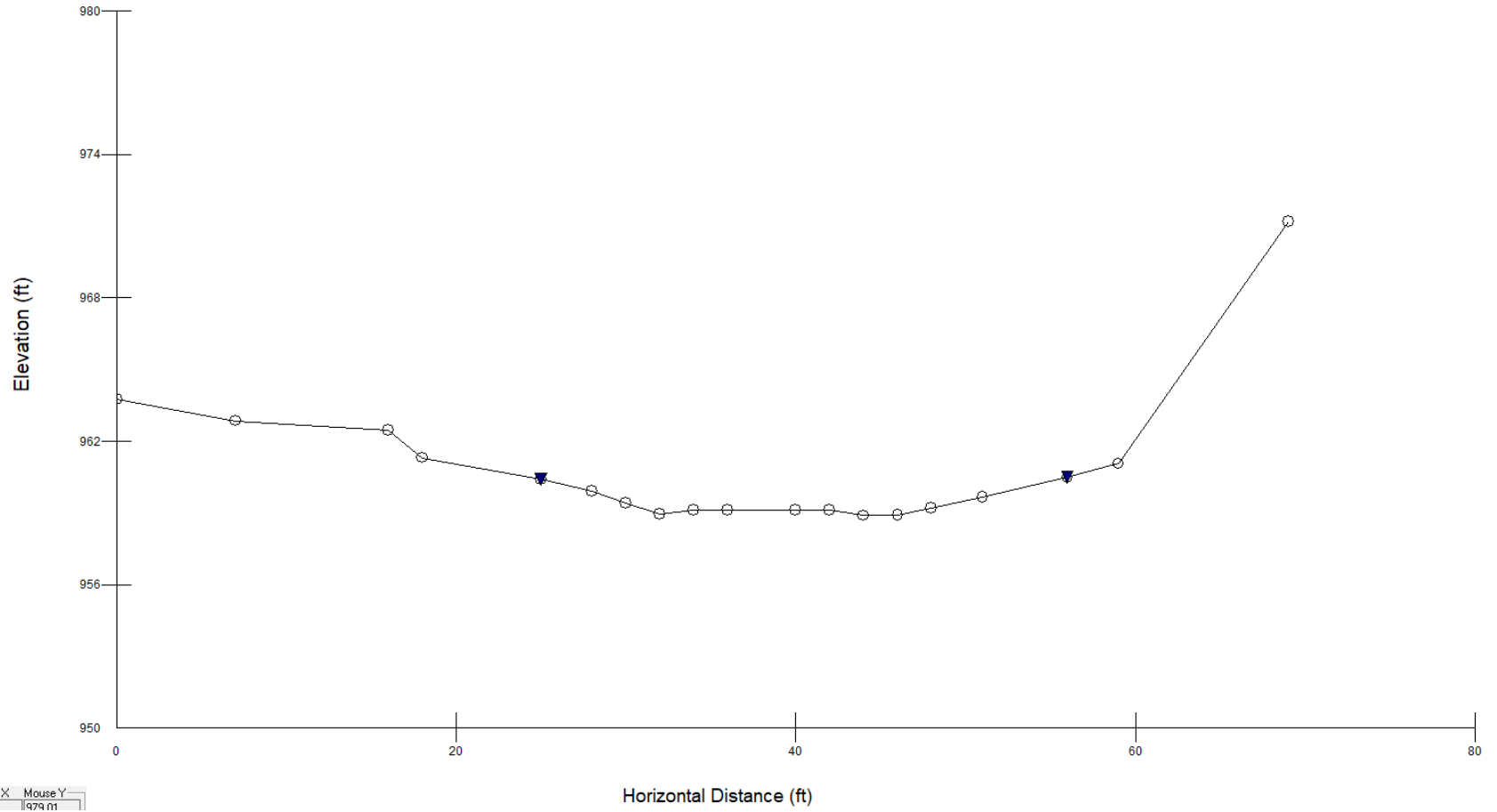


XS 3 @ 282

○ Ground Points

◆ Bankfull Indicators

▼ Water Surface Points



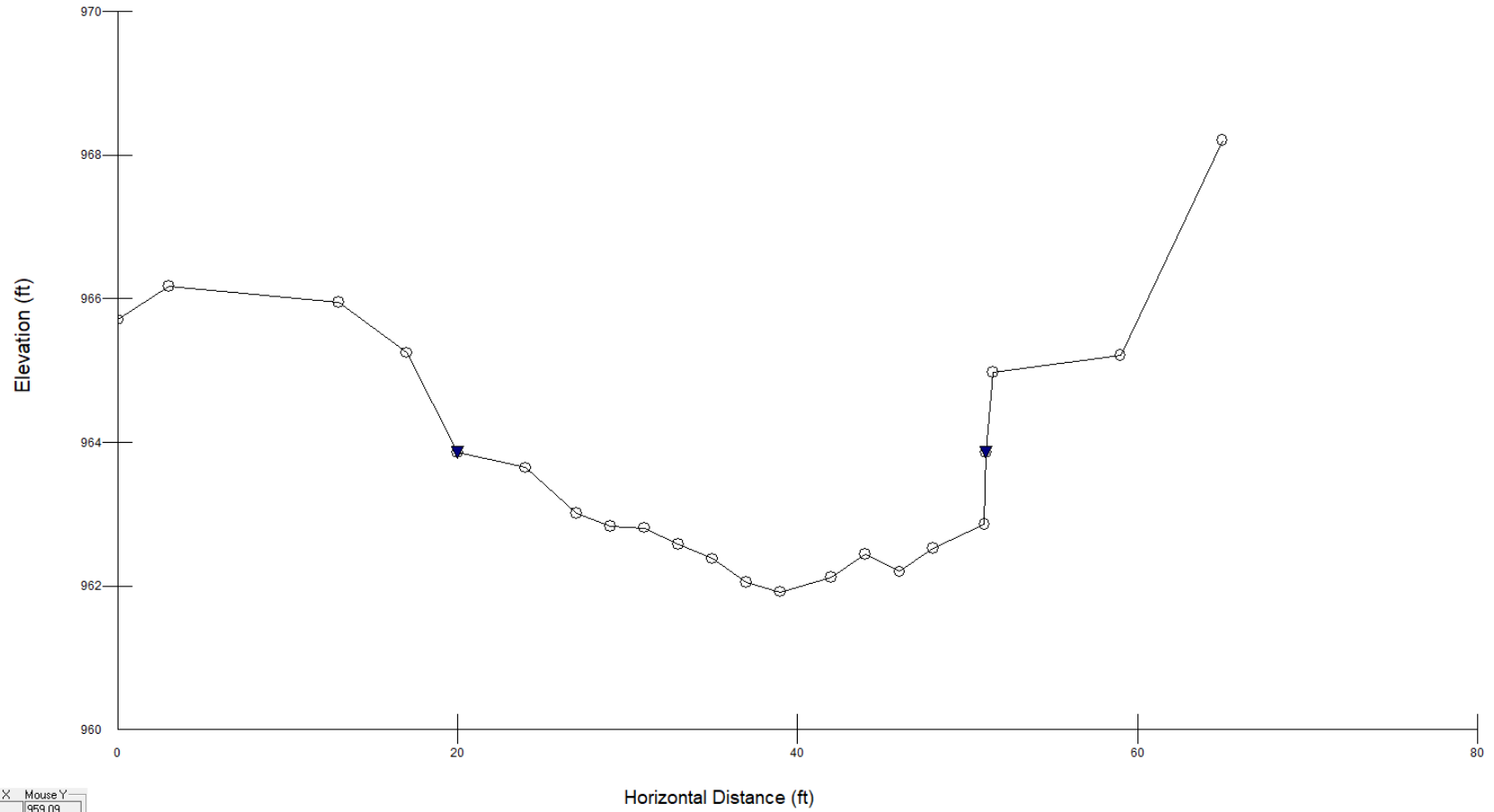
Mouse X	Mouse Y
1.498	1979.11

# XS 4 @ 335

○ Ground Points

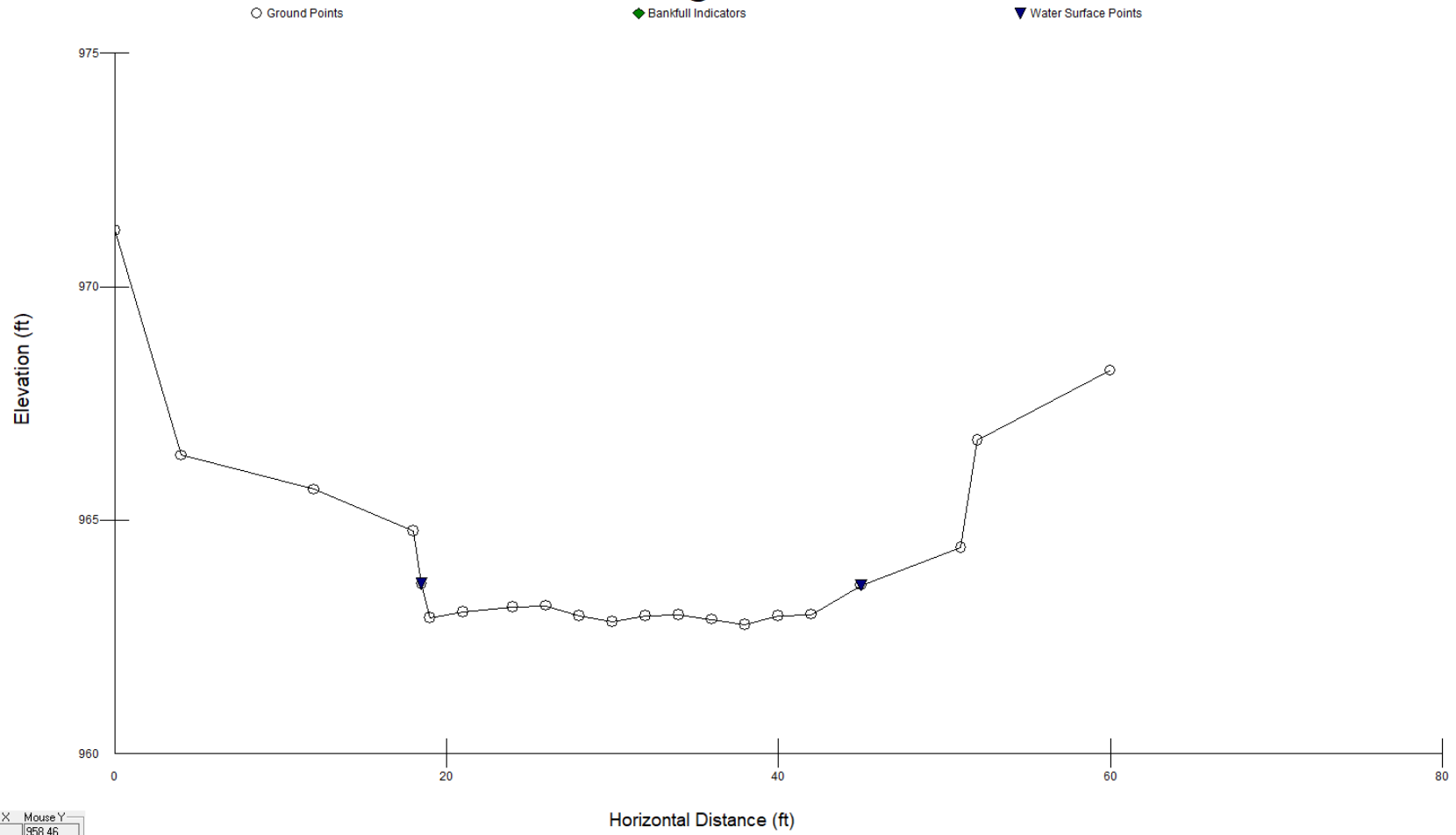
◆ Bankfull Indicators

▼ Water Surface Points



Mouse X: 11.36  
Mouse Y: 969.09

# XS 5 @ 416



Mouse X: 30.23  
Mouse Y: 958.46